



- ✓ Internet Of Things (IoT) Gateway
- ✓ Open development platform
- ✓ OpenWrt based O.S. and SDK

Applications

- Standard ADSL connections
- IP addressing for non-IP devices
- Internet of Things Gateways, IoT legacy devices adaptation, M2M interfaces
- Ideal for mastering your home/small office network, adding home networking software for customized energy saving/surveillance applications

Hardware Features

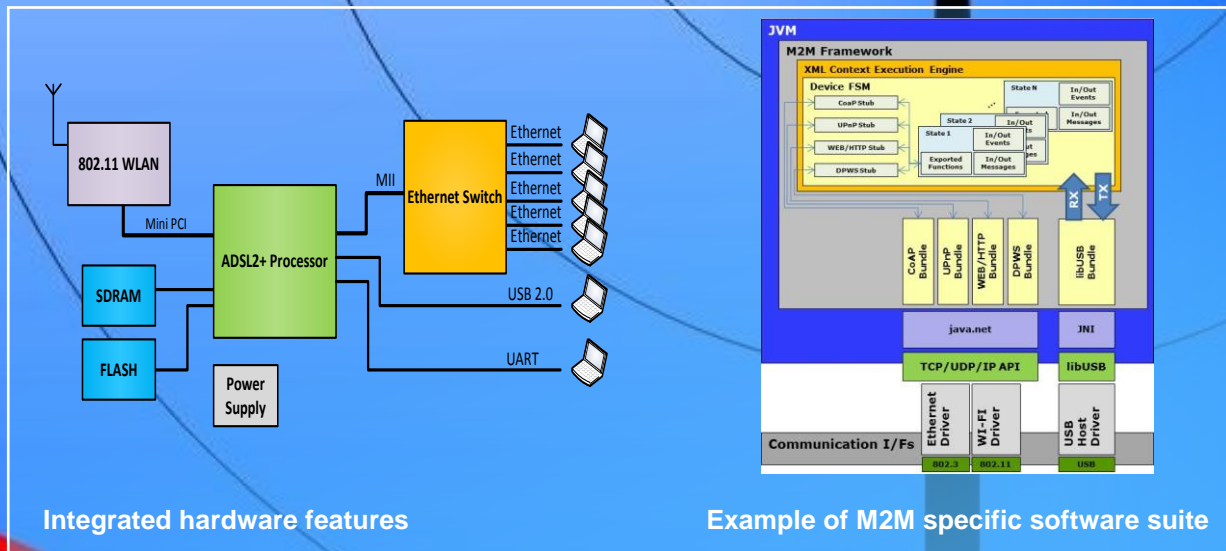
- Dual core processor
- 5 port 10/100 Ethernet switch
- WLAN extension card
- 8MB FLASH
- 32MB DDR-SDRAM
- USB 2.0 host
- LED indicators for Power, Warning, LAN/WAN links
- RS-232 port for development and debug

Advantages

- Integrated solution for ADSL2/2+ gateway
- Five Ethernet ports, USB 2.0 port and WiFi module
- Offers open Linux architecture for customized software/protocols implementation

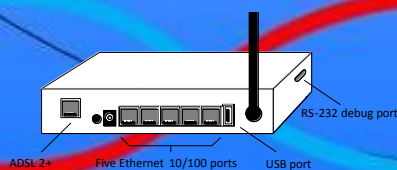
Software Features

- Firmware update capability via boot loader or console
- Boot loader access
- Fine grained administration and configuration environment
- Package manager with configurable connection to remote repositories
- Java support



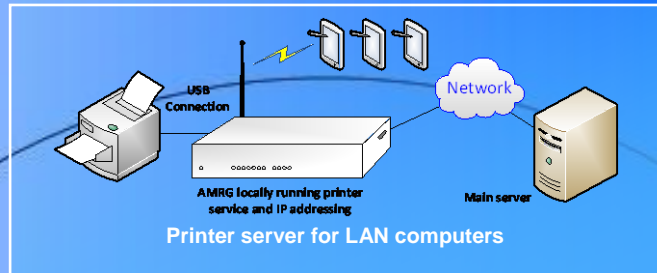
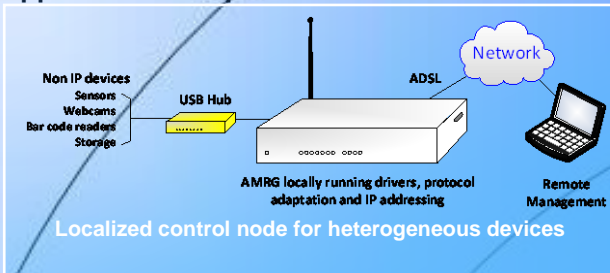
Integrated hardware features

Example of M2M specific software suite



Back panel interface connectors

Application Examples



Type	Description
Default protocols supported	
Network Interface Standards	IEEE 802.11a (OFDM up to 108Mbps), 802.11b (DSSS 1, 2, 5.5, 11Mbps), 802.11g (OFDM up to 108Mbps, DSSS 11Mbps), IEEE 802.3 10/100, IP
Communication protocols	TCP/IP, UDP, DHCP
Network protocols	SSH, NAT, UPnP, CoAP, WEB/HTTP Bundle, DPWS Bundle
Default security supported	
Access and security	NAT and SPI firewall, IP packet/URL/MAC filter, SYN-Flood protection, Invalid packet detection
VPN support	VPN Support, IPSec Pass-Through, PPTP Pass-Through, L2TP Pass-Through, PPTP server
Integrated developer's features	
Network diagnostics	ping, traceroute, nslookup
Configuration	Web-based GUI configuration and firmware upgrade, Configuration backup and restore, Debug interface and log functions
USB Access	LibUSB Bundle
Technical characteristics	
System requirements	Windows® 8/32bit/64bit, Windows®7/32bit/64bit, Windows® Vista/32bit/64bit, Windows® XP/32bit/64bit, Mac OS X, Linux
Physical dimensions	Length: 13.3cm, Width: 17.8cm, Height: 4cm
Interfaces	WAN Line: ADSL 2/2+, Ethernet: Five 10/100 / 802.3, USB: 2.0, Wireless LAN: 2.4GHz / 802.11
Antenna	5dBi Removable
Power supply	Wall mounted, Input: 100~240VAC, Output: 12V / 1.5A
Operating temperature	0° – 40° C
Package contents	1. AMRG, 2. AC/DC adapter, 3. Telephone line cable (RJ-11), 4. Line splitter/filter, 5. Ethernet cable (RJ-45)
Compliance	
Radio compliance	EN 301 893
EMC compliance	EN 301 489-1
Safety compliance	EN 60950